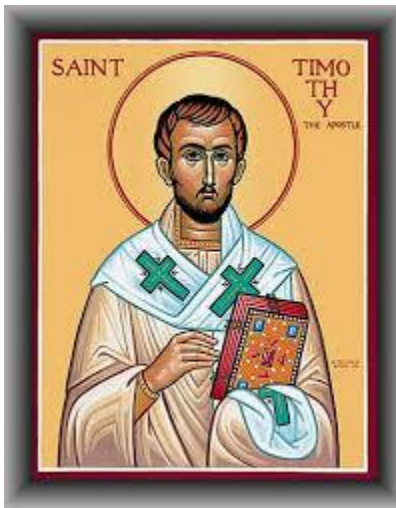


# **Saint Timothy Catholic School**



## **Preschool Parent Handbook 2018-2019**

**Father David Meng, Pastor  
Mr. Michael Pryor, Principal  
Mrs. Julie Evans, Preschool Director**



*This school is accredited by the Virginia Catholic Education Association whose accreditation process has been approved by the Virginia Council for Private Education as authorized by the Virginia State Board of Education.*

## Table of Contents

I.	PHILOSOPHY OF EDUCATION/MISSION STATEMENT .....	1
	Diocesan Philosophy of Catholic Education.....	1
	Diocesan Mission Statement.....	1
	School Mission Statement/Philosophy .....	1
	Student/Parent Handbook .....	1
	Parental Role.....	2
	Non-Discrimination Clause .....	3
	Non-Catholic Children.....	3
II.	CURRICULUM.....	4
	Supplies and Materials.....	5
	Assessment.....	6
	Parent-Teacher Communication .....	6
	Scheduling and Other Conference Information .....	6
	Progress Reports .....	6
	Retention/Promotion/Placement .....	6
III.	ADMINISTRATIVE PROCEDURES .....	7
	Admissions.....	7
	Diocesan Initial Admission Requirements.....	7
	Eligibility .....	7
	General Requirements for Preschool Admission.....	7
	General Conditions of Admission.....	8
	International Students .....	8
	Class Placement .....	11
	Attendance .....	11
	Absence/Tardiness/Leaving School.....	11
	Attendance/Reporting Procedures .....	11
	Absence.....	11
	Tardiness.....	11
	Medical Excuses .....	11
	Anticipated Absence .....	11
	Release of Children.....	12
	Transferring to Another School .....	12
	Lunch/Milk Program.....	12
	Arrival and Dismissal .....	12
IV.	GENERAL SCHOOL POLICIES .....	15
	Administrative.....	15
	Child Custody and Guardianship.....	15
	Access to Records.....	16
	Retention of Records.....	16

	School Visitors.....	17
	School Communications .....	17
	Principal/ Director’s Communication.....	17
	Take-Home Communication.....	17
	Telephone Use .....	17
	Inclement Weather/School Closings.....	18
	Photos and Other Media.....	18
	Library18	
	Field Trips.....	19
	Overnight Trips.....	19
	Parent Organizations.....	20
	Fundraising .....	20
	Transportation/Parking .....	20
V.	FINANCES.....	21
	School Tuition Policies.....	21
	Tuition and Other Fee Schedules.....	21
VI.	CHILD RESPONSIBILITIES & BEHAVIOR .....	22
	Code of Conduct .....	22
	Discipline .....	23
	Use of Disciplinary Action .....	23
	Specific Disciplinary Policies .....	23
	Suspension .....	23
	Dismissal.....	24
	Expulsion .....	24
	Regulations and Procedures.....	24
	Care of School Property.....	25
	Dress Code.....	25
	Dress Code Requirements & Other Pertinent Information.....	25
	Playground Regulations.....	26
	Lunchroom Regulations.....	26
	Show & Tell.....	26
VII.	HEALTH, SAFETY, & WELFARE .....	28
	Student Health, Safety, & Welfare .....	28
	Prevention of Sexual Misconduct and/or Child Abuse.....	28
	Wellness Policy.....	28
	Accidents and First Aid .....	29
	Illness 29	
	Medication Administration Overview .....	29
	Specialized Student Care Needs .....	31
	Use of Crutches.....	31
	Use of Microwave Oven .....	31

Life Threatening Allergy .....	31
Infectious/Communicable Diseases .....	32
Disease .....	32
Lice 33	
Bloodborne Disease .....	33
Fire/Emergency Drills.....	34
Sexual Harassment - Students.....	34
Bullying.....	34
Asbestos Mandatory Yearly Notification .....	35
Asbestos Notification (Sample Letter).....	35
Video Surveillance Cameras.....	36
VIII. CHILDREN WITH SPECIAL NEEDS .....	38
IX. PROGRAM INFORMATION.....	38
Licensing Information.....	38
Crisis Management/Emergency Preparedness Plan.....	40
Over-the-Counter Skin Products.....	40
Insurance .....	41
Tax Information .....	41
Parental Involvement .....	41
X. APPENDICES .....	41
School Forms	
Additional School Information	
Diocesan Forms	
Permission for Emergency Care Form ( <i>Appendix F-1</i> )	
Confidential Health History Update ( <i>Appendix F-1A</i> )	
Virginia School Entrance Health Form ( <i>Appendix F-2</i> )	
Virginia School Entrance Health Form Instructions ( <i>Appendix F-2A</i> )	
Inhaler Authorization Form ( <i>Appendix F-3</i> )	
Asthma Action Plan ( <i>Appendix F-3A</i> )	
Epipen/Twinject Authorization Form ( <i>Appendix F-4</i> )	
Allergy Action Plan ( <i>Appendix F-4A</i> )	
Diabetes Reference Emergency Plan: Hyperglycemia & Hypoglycemia ( <i>Appendix F-5</i> )	
Diabetes Medical Management Plan ( <i>Appendix F-5A</i> )	
Medication Authorization Form ( <i>Appendix F-6</i> )	
Confidential Individual Health Office Visit Record ( <i>Appendix F-11</i> )	
Waiver Information/Right to Object Form ( <i>Appendix N</i> )	
Parent Permission Form for School Sponsored Trip Participation ( <i>Appendix R</i> )	
Use of Personal Vehicle ( <i>Appendix R-1</i> )	
Academic Intervention Plan ( <i>Appendix AA</i> )	
Preschool Handbook Agreement Form ( <i>Appendix AG-3</i> )	

## **I. PHILOSOPHY OF EDUCATION/MISSION STATEMENT**

### ***DIOCESAN PHILOSOPHY OF CATHOLIC EDUCATION***

*Go, therefore, and make disciples of all nations...  
Teaching them to carry out everything I have commanded you.*

*Matthew 28:19-20*

These words of Christ addressed to the apostles at the Ascension bestowed on the Church the office of teacher. Obedient to this divine challenge, the Church provides education permeated with the spirit of Christ and dedicated to promoting the full development of the human person.<sup>1</sup> The two-fold goal of Catholic schools is to provide an environment which will foster rich religious training as well as solid academic education in a Catholic, value-oriented manner.

<sup>1</sup> Declaration on Christian Education #3

### ***DIOCESAN MISSION STATEMENT***

The Catholic schools in the Diocese of Arlington are an essential component in the educational ministry of the Church. Our schools are committed to providing an education rooted in the Gospel of Jesus Christ where Catholic doctrine and values and academic excellence prepare each student for a life of faith, service, and integrity.

### ***SCHOOL MISSION STATEMENT/PHILOSOPHY***

*Saint Timothy Catholic School serves God by providing each child with an individualized approach, academic excellence, rich Catholic traditions, a solid foundation in the Catholic faith, and opportunities to serve the community.*

*Spirit  
Tradition  
Scholarship*

### ***STUDENT/PARENT HANDBOOK***

Each school shall utilize the OCS template to develop and distribute a handbook for students and parents. All local policies and procedures must be in conformity with the Office of Catholic Schools' policies, guidelines, and regulations.

A committee, representative of the total school community, shall be involved in the development and periodic revision of this handbook.

All parents are required to sign a form stating they have read the rules and regulations outlined in this handbook and they agree to abide by those rules (*Appendix AG-3*). This signature form will be given to students when they receive a copy of the handbook and the form must be signed and returned as soon as possible. Failure to have a signed form on file will not prevent the school from enforcing its policies, but could result in disciplinary action being taken and/or prevent a student from enrolling (or continued enrollment) in the school.

Faculty and staff members shall be given copies of all school handbooks.

Handbooks and all subsequent changes are subject to prior written approval by the Diocese. To the extent any local handbook or policy statement therein may be inconsistent with the policies, guidelines, or regulations of the Office of Catholic Schools, the Office of Catholic Schools' policies, guidelines, or regulations shall be of controlling force and effect.

## ***PARENTAL ROLE***

Since parents have given their children life, the Catholic Church recognizes parents as the primary and principal educators of their children. The Catholic parents' promise at baptism to raise their children as Catholic supports this premise. The Catholic school exists to assist parents in the Christian formation of their children.

In this Handbook, the term "parent" refers not only to a child's natural or adopted parent, but to a student's non-parent legal guardian or to any person or agency authorized to act in place of parents.

The Diocese of Arlington Office of Catholic Schools respects the role of parents as the primary educators of their children. Since the school is a continuation of the education children are receiving at home, Diocesan schools should demonstrate respect and support for the parents in their important and challenging task.

Parents are expected to support the school's mission and commitment to Christian principles and support the school policies as outlined in school handbooks (i.e., annually sign the school's Handbook Agreement Form). One of the conditions for initial and continued enrollment at the school is receipt of this signed form indicating the parent's support of the school's philosophy, policies, and regulations.

In the event a parent desires to discuss a problem with his/her child's teacher, the parent should make an appointment for a private meeting with the child's teacher. Teachers welcome the opportunity to discuss a matter of concern with parents before it becomes an actual problem. Any parent who wishes to speak with the principal/director may do so, but after an initial meeting with the classroom teacher.

If a parent repeatedly or seriously violates proper school protocol, displays inappropriate or disruptive conduct toward students, or displays disrespectful, disruptive or harassing behavior toward teachers or toward school, parish, or diocesan staff, the school may take corrective action. Such corrective action may include, at the discretion of the principal/director (and, for parish schools, the pastor of the parish) the following: imposition of particular rules or procedures the parent must follow in interacting with the school and its students and staff; restriction or termination of the parent's access to school or parish property; dismissal of the parent's child(ren).

The school may impose other appropriate corrective action, without prior recourse, based upon the nature of the parent's conduct and the surrounding circumstances.

As foundation for a faith-community, parents are invited and encouraged to participate in the school's celebration of prayer and Liturgy.

Parents are encouraged to participate in the programs, which are developed for the education of their children. The wide spectrum of this involvement includes volunteer work, participation in parent-teacher conferences, attendance at meetings and seminars designed to help parents assist their children at home, and active involvement in the school's Parent-Teacher Organization.

## ***NON-DISCRIMINATION CLAUSE***

Catholic Schools, administered under the authority of the Catholic Diocese of Arlington, comply with those constitutional and statutory provisions, as may be specifically applicable to the schools, which prohibit discrimination on the basis of race, color, sex, age, marital status, disability, national origin, or citizenship in the administration of their educational, personnel, admissions, financial aid, athletic, and other school administered programs.

This policy does not preclude the existence of single sex schools, nor does it conflict with the priority given to Catholics for admission as students. This policy also does not preclude the ability of the school to undertake and/or enforce appropriate actions with respect to students who advocate on school property or at school functions, any practices or doctrines which are inconsistent with the religious tenets of the Catholic faith.

## ***NON-CATHOLIC CHILDREN***

The presence of children from other faiths provides a wonderful diversity to the school. However, the presence of non-Catholic children in the school shall not alter the primacy of Catholic religious formation as an integral component of the educational program in the school. As such:

- a. Non-Catholic children are expected to participate in the religious formation and education programs of the school.
- b. Non-Catholic children must participate in liturgies, retreats, and other religious functions

incorporated within the program.

- c. Non-Catholic children may not be exempted from the catechesis held during the school day.
- d. While Catholic teaching respects the various faith traditions of the children attending the Catholic school, parents must be aware that it is the Catholic position that will be taught.

In light of the unique situations which may arise in the educational process, and because it is impossible to foresee all school issues that arise, the faculty and administration reserve the right to address and to take appropriate action for any such situations not specifically referenced in this manual. In addition, in view of the unique and essential religious mission of the school, it is expressly understood that the school may take action in cases where moral offenses occur which reflect adversely on the school, the Catholic Diocese of Arlington, or the Roman Catholic Church, or which interfere with the ability of the school to perform its religious mission or effectively maintain the intimate working relationship of the school and the Community of Faith.

This handbook may be modified by the school after reasonable notice to the parents of the effective date of any changes. Any section headings are for convenience of use, and shall not affect the interpretation of any provisions. If the school should elect not to take action in a particular situation, this shall not be construed or interpreted as a waiver, or preclude the school from acting in a subsequent situation of the same or similar kind.

## II. CURRICULUM

The curriculum is not just the goals of the program and the planned activities but also the daily schedule, the availability and use of materials, transitions between activities and the way in which routine tasks of living are implemented. Young children are expected to learn through active and positive manipulation of the environment and concrete experiences that contribute to concept development.

Without limiting the rights of the school under section VIII of this handbook, modifications may be made in the environment and staffing patterns for children with special needs.

The daily schedule is intended to provide a balance of activities with attention to the following dimension of scheduling:

- a. Daily outdoor play, weather permitting
- b. Alternating periods of quiet time and active play
- c. A balance of large muscle and small muscle activities is provided.
- d. Various small group or large group activities through most of the day
- e. A balance of child-initiated and staff-initiated activity is provided. The amount of time spent in staff-initiated, large group activity is limited.

Developmentally appropriate materials and equipment that project heterogeneous, racial, gender and



age attributes are selected for use.

The school will use media, such as television, films, videotapes and computers, that have been previewed by adults prior to use. Another option for activity is always available. No child is required to view or interact with the program; and the staff discusses what is viewed with children to develop critical viewing skills. Technology is incorporated as an integral part of the day.

The goal of the school is to emphasize concrete experiential learning and to achieve the following goals:

- a. foster positive self-concept;
- b. foster spiritual development;
- c. encourage children to think, reason, question, and experiment;
- d. develop social skills;
- e. encourage language development;
- f. enhance physical development and skills;
- g. encourage and demonstrate sound health, safety, and nutritional practices;
- h. encourage creative expression and appreciation for the arts;
- i. respect cultural diversity.

Staff provides materials and time for activities, but children choose from among several activities that the teacher has planned or the children initiate. Staff respects the child's right to choose not to participate at times.

Children are not always required to move from one activity to another as a group. Unregimented transitions are also used as a vehicle for learning.

Planned or routine activities may be changed according to the needs or interests of children, and/or to cope with changes in weather or other situations that affect routines without unduly alarming children.

Routine tasks such as toileting, eating, dressing and sleeping are incorporated into the program as a means of furthering children's learning, self-help and social skills. Through complimentary actions at home, parents are expected to assist and cooperate with staff to make feeding and the development of other independent skills a positive experience for children. Provision is made for children who are early risers and for children who do not nap.

## ***SUPPLIES AND MATERIALS***

Students are each asked to bring some individual supplies which vary by class and will be shared throughout the preschool. Please refer to the school website for a list of supplies needed for your

child's program. Use of school tote bags purchased from the school is required. Full-day students must purchase nap mats from the school as well.

## ***ASSESSMENT***

The school's program is intended to assist staff and administrators in a systematic evaluation of the program, to diagnose children's strengths and weaknesses and to aid in the revision of the curriculum and planning of instruction.

## ***PARENT-TEACHER COMMUNICATION***

Teachers are available to parents throughout the school year to keep the lines of communication open in the best interest of the children. Parent-teacher conferences can be scheduled throughout the school year if necessary. Parents should first privately contact a teacher with any concerns about a child or class situation before seeking intervention of the director or school administration.

## **SCHEDULING AND OTHER CONFERENCE INFORMATION**

Partnership between parents and teachers is expected and encouraged. Scheduled conferences are held in November for all students. A second conference time will be made available after the January progress report is sent home. Parents contact teachers directly to arrange an appointment. Parents may also request a conference at any time during the school year.

Class webpages are updated frequently to provide class-specific information and to inform parents of the activities and events at preschool. E-mail communication is regularly utilized. Teachers generally respond to email within 24 hours during the work week.

## ***PROGRESS REPORTS***

Evaluation of the child must be based on teacher judgment, observation, daily performance, class participation and effort.

Written progress reports will be sent home in January and May.

## ***RETENTION/PROMOTION/PLACEMENT***

A major goal of the school is to assist children to complete each year satisfactorily. Retention is recommended only when it is deemed necessary and advantageous to the particular needs of the child.

- a. The final decision to promote or retain a child is based on the child's developmental performance and best interests, as determined by the principal/director.
- b. Parents will be kept informed about the inability of their child to progress satisfactorily.
- c. Children who would not benefit from being retained may be "placed" in the next level; however, the school may prepare and implement an Intervention Plan for the child as a condition of placement.

### **III. ADMINISTRATIVE PROCEDURES**

#### ***ADMISSIONS***

##### **DIOCESAN INITIAL ADMISSION REQUIREMENTS**

Children who desire an educational experience founded on the Catholic philosophy of education and who fulfill the age, health and behavioral requirements are eligible for admission to the school.

##### **ELIGIBILITY**

The school sets registration procedures and admission policies. The availability of space and the order of preference for admission are determined by the school according to the following general criteria:

- a. Children from the parish
- b. Children from parishes without schools
- c. Children from parishes with schools (for sufficient reason)
- d. Children from non-Catholic families

If approved by the pastor, and where practicable, siblings may receive special consideration.

##### **GENERAL REQUIREMENTS FOR PRESCHOOL ADMISSION**

There is no testing for preschool admission. However, readiness assessment may be utilized to determine the developmentally appropriate placement in the preschool program. The following list of documents/information is required:

- a. Presentation of an original birth certificate (schools are expected to keep a copy of the certificate on file)
- b. Baptismal certificate for Catholic students
- c. Proof of custody where applicable
- d. Progress reports (if available)

- e. Completed Diocesan Application Form (*Appendix J*)
- f. A non-refundable application fee
- g. A fully executed MCH-213G Commonwealth of Virginia School Entrance Form or equivalent, which stipulates the following must be submitted prior to the student beginning school:
  - i. Proof of exact dates of immunization as required by the Code of Virginia
  - ii. Physical examination covering all required aspects as mandated on the MCH-213G, within 12 months prior to entering school for the first time. Equivalent school entrance physical forms from another state may be acceptable. (Note: A preschool physical does not take the place of the required kindergarten entry physical unless it is completed within 12 months prior to kindergarten entry.)
- h. Proof of satisfying tuition requirements at any former Diocesan school if previously enrolled in a Diocesan school.

#### **GENERAL CONDITIONS OF ADMISSION**

A child is admitted to the school on the premise the child intends to learn the Catholic religion and be educated in a Catholic environment. In certain cases, a child may be admitted on a probationary basis subject to the child successfully completing one or more subsequent interim evaluations. A child with academic or other needs (i.e., behavioral), which cannot be reasonably addressed by the school may be denied admission.

School application forms may request disability-related information. The Americans with Disabilities Act (ADA) does not prohibit a school from asking questions about a student's disabilities provided that information does not discriminate (automatically prohibit a student from applying).

#### **INTERNATIONAL STUDENTS**

The Diocese of Arlington endeavors to remain certified by the U.S. Immigration and Naturalization Service to admit F-1 Non-Immigrant students. The school, therefore, adheres to the following policies for enrolling non-U.S. persons:

1. F-1 (Nonimmigrant) students who apply for admission to a Diocese of Arlington Catholic school will be considered for admission, upon meeting the following conditions:
  - a. Meets Diocesan admission requirements as stated in Policy 601.2;
    - i. A fully executed MCH 213G Commonwealth of Virginia School Entrance Form or equivalent, which stipulates the following must be submitted prior to the student beginning school:
      1. Proof of exact dates of required immunization as required by the Code of Virginia.
      2. Physical examination covering all required aspects as mandated on

the MCH 213G within 12 months prior to entering school for the first time. Equivalent school entrance physical forms from another state may be acceptable. (Note: A preschool physical does not take the place of the required kindergarten entry physical unless it is completed within 12 months prior to kindergarten entry.)

- ii. F-1 (Nonimmigrant) students who enroll in a school in the Diocese for the first time must provide documentation that they are free from communicable tuberculosis. (Policy 624.1.b).
- b. Currently holds or is in the process of obtaining an F-1 (Nonimmigrant) student visa;
  - c. Resides at the same U.S. address as the guardian;
    - i. Guardian cannot house more than two international students;
  - d. Pays tuition in full upon school admission;
    - i. There is no refund given for registration, tuition or other related fees;
2. Students meeting the above criteria and accepted for admission must complete the Diocese of Arlington *I-20 Application Form* and return the form to the school the student will be attending. The school must forward the Diocese of Arlington *I-20 Application Form* to the Office of Catholic Schools with the original signature of principal or admissions director.
3. When a student is transferring *from* another school outside the Diocese, the originating school must transfer the existing I-20 in active status to the Diocese of Arlington. A Diocese of Arlington *International Student Transfer Report* must be completed by the originating school and returned to the Office of Catholic Schools along with the *I-20 Application Form*. It is the responsibility of the parent or guardian to contact the originating school within 15 days of leaving that school to have the I-20 transferred;
- a. A student must maintain status by attending classes until the transfer release date. Lack of attendance before the transfer date would be a violation of status and the student's SEVIS record should be terminated;
  - b. The student must report to the school within 15 days of the program start date and enroll full time in the first required session/term at the school;
  - c. When a student is transferring *to* a school outside the Diocese of Arlington school system, the Diocese of Arlington must transfer the existing I-20 in active status to the new school. It is the responsibility of the parent or guardian to contact the Office of Catholic Schools within 15 days of leaving the Diocesan school to have the I-20 transferred.
4. In order for international students to maintain F-1 (Nonimmigrant) student status, the Department of Homeland Security requires ongoing accounting. In that regard, schools are responsible for ensuring the enrollment status of all F-1 (Nonimmigrant) students is reported

correctly. High Schools will report via the Diocese of Arlington *Semester Report on Status of F-1 (Nonimmigrant) Students* form (Appendix AH). Reports for elementary school international students will be accessed through the Student Information System district database. Specifically, the school shall:

- a. Submit a *Semester Report on Status of F-1 (Nonimmigrant) Students* form for each high school international student who has been issued an I-20 regarding the enrollment status of any F-1 (Nonimmigrant) student. This form is due to the Office of Catholic Schools within 30 days of the beginning of every semester;
  - b. Create and update elementary F-1 (Nonimmigrant) student record in the Student Information System, ensuring all fields pertaining to international students are completed. All F-1 (Nonimmigrant) student records must be completed and/or updated within 30 days of the beginning of every semester;
  - c. Notify the Office of Catholic Schools via the *Semester Report on Status of F-1 (Nonimmigrant) Students* form if an F-1 (Nonimmigrant) student has been accepted by that school and fails to report to the school within 30 days of their Program Start Date;
  - d. Notify the Office of Catholic Schools via the *Semester Report on Status of F-1 (Nonimmigrant) Students* form within 15 days when an F-1 (Nonimmigrant) student transfers to another school or departs the United States;
  - e. Report via the *Semester Report on Status of F-1 (Nonimmigrant) Students* form any legal change in the name, address, or guardianship of an F-1 (Nonimmigrant) student within 10 days.
5. For students who hold a visa other than F-1, refer to Appendix AJ (*Visa Types*);
- a. Students who are currently in B-1 or B-2 status cannot begin their studies prior to approval of their change to F-1 (Nonimmigrant) student. Obtaining a change of status is the responsibility of the parent or guardian.
  - b. Students who are currently in B-1 or B-2 status may be enrolled to audit classes at the discretion of the principal for a limited time (generally not more than two months) but must still meet Diocesan admission requirements pertaining to the MCH 213G Commonwealth of Virginia School Entrance Form and provide documentation that they are free from communicable tuberculosis. (Policy 624.1.b).

Any student applicant whose passport, United Nations travel document or other United States Citizenship and Immigration Services (USCIS) documents indicates that the student is a refugee, asylee, parolee, lawful nonimmigrant or legal permanent resident may be admitted to the schools of the Diocese of Arlington under normal requirements for admission. This policy would also include undocumented children.

## **CLASS PLACEMENT**

The principal/director and faculty reserve the right to place a child in a class to ensure the best interests of the child.

## ***ATTENDANCE***

### **ABSENCE/TARDINESS/LEAVING SCHOOL**

Regular attendance in the program is strongly encouraged for setting the groundwork for a successful school experience. Neither the school, the Diocese, the Office of Catholic Schools, nor any of its employees/staff are responsible for ensuring actual attendance; this is the responsibility of the child's parent(s)/guardian(s).

Except in cases of emergency as determined by the principal/director and/or a staff member (as applicable or necessary), a child may only be released from school to another authorized adult with the prior written or verbal authorization of the child's parent. The adult will be required to produce identification before the child is released.

Children registered for the full-day program are expected to regularly attend school each day for the entire school day.

### **ATTENDANCE/REPORTING PROCEDURES**

#### **ABSENCE**

On the first day of absence, please email your child's teacher. A written excuse explaining the reason for absence and signed by the parent must be presented upon return to the school.

#### **TARDINESS**

A student who is tardy should report to the principal/director's office or attendance office. A student who arrives late with an excused reason (i.e. director's note) is counted tardy.

Frequent cases of tardiness should be brought to the attention of the principal/director so that the parent may be contacted.

Tardy students must be walked into the school and signed in at the school office by a parent.

#### **MEDICAL EXCUSES**

If your child has been absent for more than three days or has had a contagious illness, a physician's note is required upon return.

Please notify the school of any household communicable disease. From the Standards for Licensed Child Day Centers: "When children at the preschool have been exposed to a

communicable disease listed in the Department of Health’s current and communicable disease chart, the parents shall be notified within 24 hours or the next business day of the center’s having been informed unless forbidden by law, except for life threatening diseases, which must be reported to parents immediately.”

#### **ANTICIPATED ABSENCE**

If you anticipate that your child will be absent for personal and/or medical reasons, please inform your child’s teacher. Although attendance is not mandatory, please remember that regular attendance will assure more progress both academically and socially.

#### **RELEASE OF CHILDREN**

Parents must sign their children in/out when arriving late or being released outside of regular school hours.

### ***TRANSFERRING TO ANOTHER SCHOOL***

The school must be notified in writing by the parent(s) of a child regarding a decision to transfer a child to another school, including the last day the child will attend classes at school. All school-owned materials must be returned to school and all fees paid before leaving. Scholastic information will be sent to the new school upon a “Release of Student Records Form” from the new school. All fees and tuition **MUST BE PAID** prior to the release of the child’s records.

### ***LUNCH/MILK PROGRAM***

Rules for acceptance and participation in the U.S. Department of Agriculture Child Nutrition Programs are the same for all children without regard to race, color, sex, age, handicap or national origin. Any person who believes he or she has been discriminated against in any USDA related activity should write to the Secretary of Agriculture, Washington, DC, 20250.

### ***ARRIVAL AND DISMISSAL***

Each school should formulate a policy of traffic, pedestrian, bike, and bus safety for its students and communicate this policy to all school personnel, students, and their parents. Older students in elementary schools and secondary school students may serve as traffic/pedestrian safety patrols at the discretion of the school principal. Within the scope of this designation, the students shall work under the supervision of and in cooperation with the school principal and the local police liaison for safety issues.

The morning and full-day preschool program begins promptly at 8:00 a.m. Parents should follow the regular morning drop off procedure outlined in the following section of this handbook. Carpool



begins at 7:35 a.m. Students may be dropped off until 8:00 a.m. Safety patrols and staff will escort students through the building and into their classrooms.

Dismissal for the morning preschool program is promptly at 11:00 a.m. Parents are asked to park their car in the parking spaces directly in front of the school or on the sides of the church and pick up their child directly from the preschool teacher at the front door of the school. Parents who arrive later than 11:00 will be assessed a late fee.

The afternoon preschool session begins at 12:15. Parents are asked to park their cars and walk students to the teacher who will be waiting at the front door.

Dismissal for the afternoon preschool and full-day preschool programs is promptly at 3:15 p.m. Parents must pick up their child in the regular carpool line. The children will remain in the school until their carpool number is called. The Preschool carpool procedure is outlined in the following section of this handbook.

Every effort should be made to pick-up students in a timely fashion. Parents who anticipate arriving late for pick-up should must make alternative arrangements and notify the office of these arrangements as soon as possible. Students who are not picked up on time will be sent to AfterCare to wait for pick up. Parents will then need to park their car and report to the Aftercare office to pick up the student. While it is understandable that emergencies arise from time to time, families will be billed for AfterCare if they are late for pick up.

## **Arrival Procedures for Preschool Students Arriving at 8:00:**

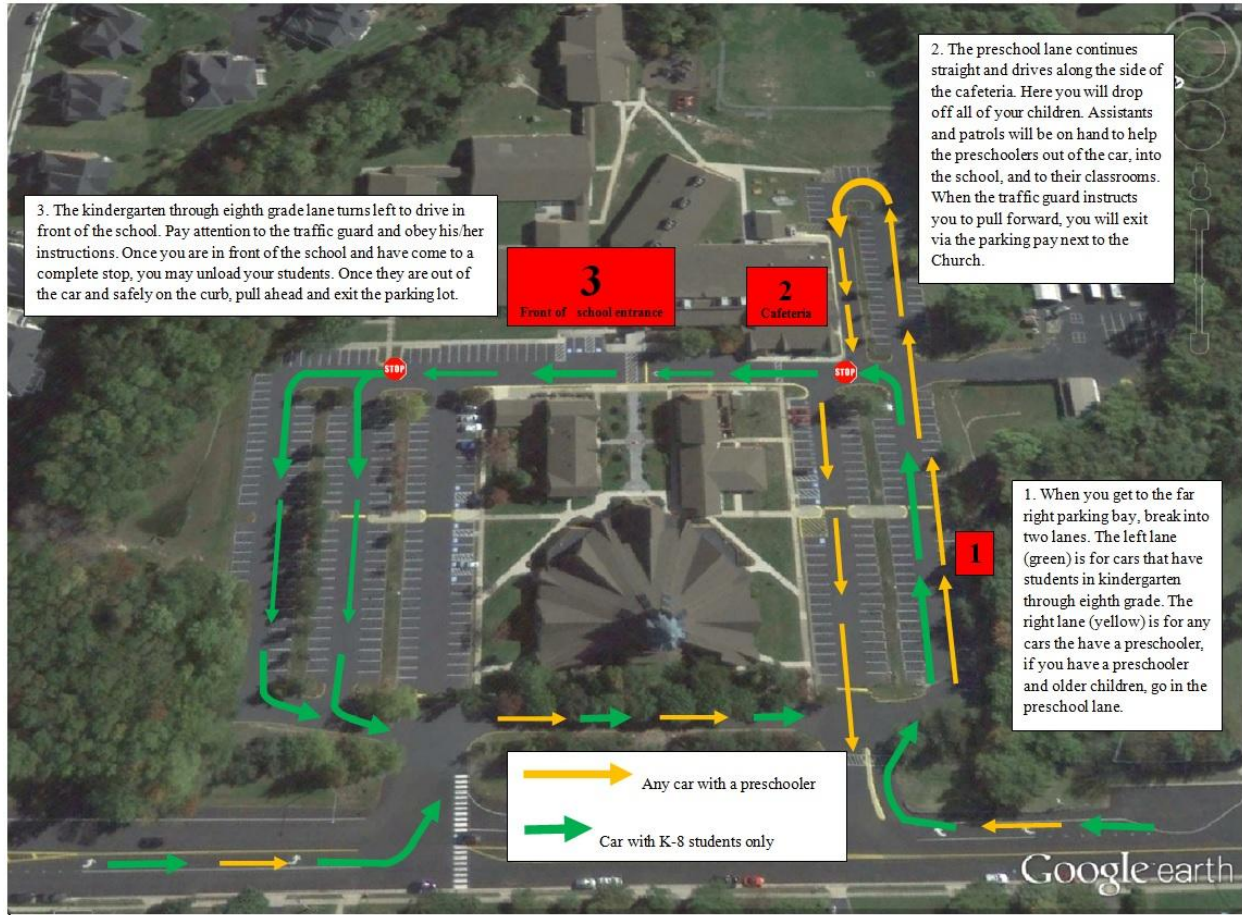
Carpool begins at 7:35 a.m. daily. Cell phone use is not permitted while in the carpool line. Please follow the directions of the traffic person who will be directing each morning. All traffic approaches the school from the right side of the church. Use the bay farthest to the right. Any car with a Preschool student in it must use the right lane upon entering. This lane will loop along the side of the cafeteria. When your car is adjacent to the curb, staff members will open your car door and escort your child to the Safety Patrol. For the safety of staff and students, children must exit cars on the side adjacent to the school. Parents should remain inside vehicles during unloading. When it is safe to proceed, a staff member will indicate the exit path for your car onto Poplar Tree Road.

At 8:00 the carpool line is closed. Please park your car, escort your child into the building, and sign them in. Preschool children are not permitted to use the front carpool line even if it is still open.

### **First Day of School:**

Preschool parents are permitted to walk their child into class only on their first two days of school. Please park along the side of the church rather than in the bays used for carpool.

### **Arrival Graphic:**



## Dismissal Procedures for Preschoolers Leaving at 3:15:

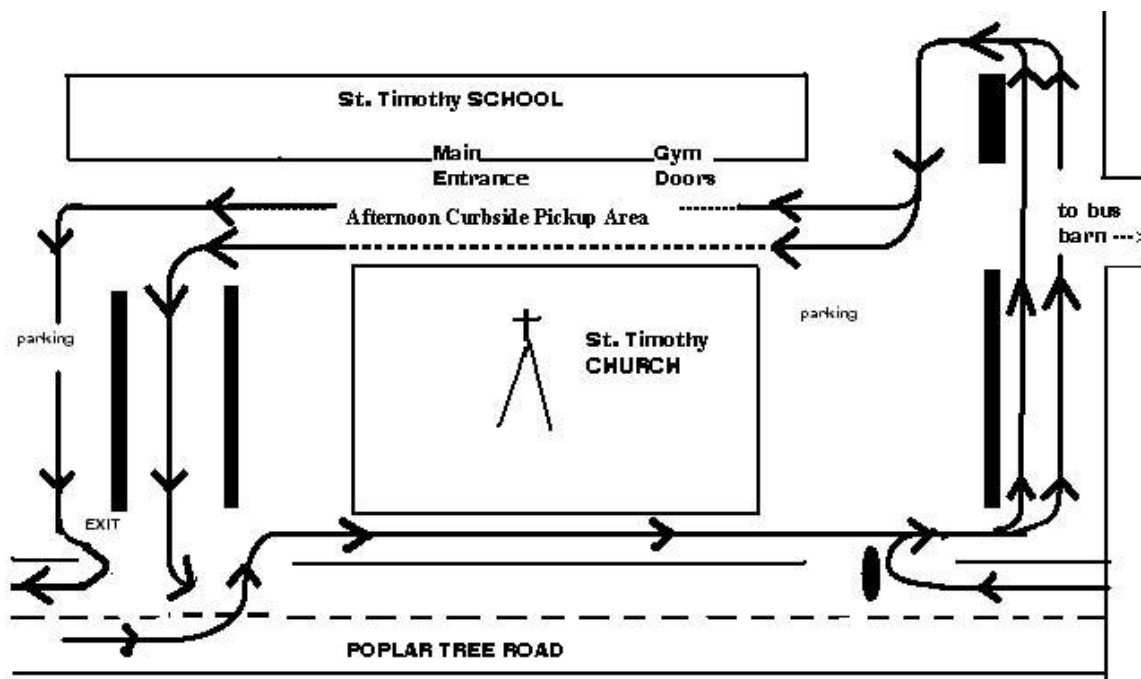
Dismissal begins at 3:15 and typically ends by 3:35. Cars often begin lining up at 2:45 to be in the first “round” of carpool. Approach school on the right side of the church. Remain in the right lane if you wish to turn right out of the parking lot. Stay in the left lane if you plan to turn left when leaving school. Cars must have the carpool number on both sides of the windshield. This number is used to call your child for dismissal. Children will be brought to cars stopped along both the front and side of the school. Please remain with your car. It is helpful if you stand outside your car and wave to help your child and escort find you. Children do not step off the curb until the bell has sounded.

A couple of reminders -

- Even on the first day parents should use the carpool system after school.
- There is no parking in front of the school during school/d dismissal hours.
- Directions given by staff must be followed.
- Cars must come to a complete stop.

- Drivers must be free of distractions including the use of cell phones.
- Engines must be turned off for the safety of all persons.
- Teachers will monitor student behavior and help to ensure safety.
- Teacher direction will indicate when cars are to begin moving from the front of the school.
- If late, parents must come into the building to sign out your student. St. Timothy reserves the right to send students who are not picked up to the after school care program. Any fees incurred will be the responsibility of the parent.

Don't see your child? No worries! Pull down to the "End Zone." (Parking areas just past the end of the school on the left side.) Your child will meet you there after you tell the teacher the carpool number.



## IV. GENERAL SCHOOL POLICIES

### *ADMINISTRATIVE*

#### **CHILD CUSTODY AND GUARDIANSHIP**

At the time of school entry or at any other time where a change in custody status/arrangements occurs, it is the responsibility of the parent(s) to provide the principal/director with a true and

correct copy of the legal document for any child for which there is a legal custody agreement or for any child not residing with his/her parent.

School communication with the appropriate guardian is essential. Accordingly:

- a. Custodial parents should identify, in writing, other adults who may have access to information regarding their child.
- b. Non-custodial parents may receive information (when requested) regarding the child unless specific documentation to the contrary is provided in the legal custody agreement.

### **ACCESS TO RECORDS**

Parents have a right (unless prohibited by the courts in a custody agreement) to the timely inspection of the educational records (cumulative and confidential) of their child during school hours. The school shall respond to reasonable requests for explanations and interpretations of the records.

If the educational records of a child contain information on more than one child, the parents are limited to the specific information about their child only.

Student records shall be open to authorized school personnel only (principal, director, assistant principal, and those to whom they extend access within a given year.)

The school administration may elect to provide, at cost, photocopies of a child's educational records to parents, but documentation is to be stamped "unofficial."

Parents are obligated to share educational/psychological testing results and any resulting plan with the school. If a student has a documented disability, a copy of the Individualized Education Plan (IEP), Individualized Services Plan (ISP), 504 plan, and/or Student Assistance Plan (SAP) should be maintained in the student's confidential file. The refusal to provide such information is a ground for terminating enrollment in the school.

Confidential records for dis-enrolled students are merged with the students' cumulative files.

### **RETENTION OF RECORDS**

The following student records are to be retained indefinitely:

Permanent record card (to include transcripts, attendance record and standardized test results)

The following student records are to be retained for 25 years:

- a. IEP/ISP or 504 Plan
- b. Student Assistance Plan
- c. Eligibility Minutes

d. Student Assistance Team minutes

The following student records are to be retained for 7 years, or when the student reaches the age of 25, whichever is greater:

- a. Application
- b. Counselor notes
- c. Discipline notes
- d. Court Documents
- e. Psychological reports

### **SCHOOL VISITORS**

All persons other than school staff and currently registered children must first report to the school office immediately upon entering school grounds, sign in and wear an identification tag when visiting the school.

Doors are locked promptly after school starts. Visitors will need to use the security system to gain access to the building.

### **SCHOOL COMMUNICATIONS**

#### **PRINCIPAL/ DIRECTOR'S COMMUNICATION**

The primary form of communication from the Principal is through a weekly email blast to all families called "Tuesday Tidbits" In addition to the Tuesday Tidbits, the Preschool Director sends families regular electronic communication as well. A copy of the handbook, school policies, and curriculum guidelines are available through the website along with other pertinent information.

#### **TAKE-HOME COMMUNICATION**

All materials prepared by parents for release to the parish or school community must be approved by the principal/director or his/her designee.

As mentioned above, the school webpage is an excellent source of communication from school. Prior to the start of the school year, there will be an electronic mailing to each family containing information and forms required for the start of the school year. Parents should look to the website for the most up-to-date information and refer to the Tuesday Tidbits weekly newsletter.

A school calendar will be provided in August. Any necessary changes will be communicated through the Principal's email as soon as possible and will be updated on the school webpage.

#### **TELEPHONE USE**

Preschool students do not have access to the school telephones. If a parent needs to reach a teacher for any reason, they may do so through the school office. Please do not use email communication if you need to get information to the teacher immediately. The teacher is supervising children and cannot always access email during the course of the day.

### **INCLEMENT WEATHER/SCHOOL CLOSINGS**

**Delayed Openings:** In the event of a one-hour delay, morning preschool runs from 9:00-11:00 and the afternoon session remains the same. If there is a two-hour delayed opening, the morning session will have school from 10:00-12:00 and the afternoon classes will be from 1:15-3:15.

On the rare occasion when we are scheduled for a noon dismissal and there is cause for a change in schedule, the following procedure applies: If Fairfax County announces a one hour delayed opening, we will have school from 9:00 a.m. to 12:00 p.m. If Fairfax County announces a two-hour delayed opening, we will not have school.

If Fairfax county schools are having a scheduled holiday, and STS is not, parents will receive notification from the school via our school messenger system if school will be delayed or closed. The message will be sent via email and phone. Please also note that any changes due to inclement weather will be posted on the school website by 6:00 a.m. in the event of a cancellation or delayed opening. In the event of an early dismissal, postings will be made as soon as possible. In an emergency, you will receive notification through our school messenger system.

Please note that the St. Timothy Catholic School Extended Day Program will remain open in the event that there is an early dismissal or in the event that Fairfax County Schools cancel after-school activities. We encourage parents to pick up their children as soon as possible but will remain open until the last child is picked up.

### **PHOTOS AND OTHER MEDIA**

Parents may opt their children out of participating in videotaping, audio recording, school pictures, other photography or participation involving the Internet. When a parent decides to exercise this right, the school is required to use the *Waiver/Right to Object* form (Appendix N). All student or parental publications are subject to review and approval by the school administration prior to publication.

### **LIBRARY**

All books chosen for classroom reading in Diocesan schools must be appropriate for students, not only in age level and reading ability, but also for the moral development which we are working to foster. All books shall conform with Diocesan policies and guidelines regarding Catholic education.

Parents or teachers who object to reading or audio-visual/computer materials must complete an Objection to Content Form (*Appendix K*) and submit it to the school principal/director. A review

committee (to include an Office of Catholic Schools member) will subsequently discuss the objection and decide the disposition of the challenged material. The parent or teacher initiating the review should be personally notified of the results of the review.

Preschool students do not check out library books.

## **FIELD TRIPS**

Field trips are privileges planned by teachers and approved by the school administration with educational purposes as the primary objective and in light of financial considerations.

Field trips are considered an extension of the school day and the code of conduct will apply.

A child must give to the sponsoring teacher a permission form signed by a child's parent(s) prior to a child participating in each activity (*Appendix R*).

In the event private automobiles/vehicles of children, parents or other authorized adults of at least 21 years of age are to be utilized to transport children on field trips, the drivers and/or the vehicle owners must have a valid driver's license and sufficient liability, medical and uninsured motorist insurance coverage as defined by the Diocesan Risk Manager. Evidence to this effect must be presented to the principal/director for review and approval prior to the use of such vehicles. Appendix R-1 must be used for this purpose. The principal/director shall have the right to prohibit, for any reason, a proposed driver from transporting children on a field trip.

Youth weighing less than 100 pounds may not be seated in the front seat.

Phone calls and texting are not permitted while driving.

Teachers and other school employees should not drive students in their personal vehicles.

Parents/guardians are to be furnished with detailed written information about the field trip, and must be given the opportunity to “opt out” their children from the field trip.

It should also be understood, in light of world conditions and specifically threats of terrorism against Americans, that it may be necessary to cancel school-sponsored trips due to world and national developments at any time.

All medications given on field trips must comply with medication administration policies. For a student with prescription medication and/or medically necessary health related procedures or treatments, a trained individual needs to be present on the field trip such as a school nurse, parent/guardian or designated family member to ensure care in the case of an emergency. If a trained individual of the school is unable to chaperone the student on a field trip, it is the responsibility of the parent to provide a trained individual to accompany the student.

## **OVERNIGHT TRIPS**

Overnight trips are not permitted for preschool children.

## ***PARENT ORGANIZATIONS***

Parent-teacher (and/or home-school) organizations are sponsored by the school to promote a cooperative effort at meeting certain needs of the child. The parent organization is subject in all respects to the control of the school. All parent organization activities and all materials prepared by parents must be submitted to the principal/director for approval prior to implementation and/or distribution.

All PTO monies must be deposited in the parish or school account as designated by the pastor. In consultation with the principal/director, the PTO officers should prepare a budget and submit it to the pastor and principal/director for approval.

Persons nominated to serve as a PTO board member must receive the approval of the pastor and principal/director.

Every school should have an effective Parent-Teacher Organization. An effective Parent-Teacher Organization should strive to provide support and assistance to the principal/director regarding advancement of the school's mission and legislative issues concerning the school as directed by school leadership.

Every school should have a representative on the Diocesan Council of PTOs.

## ***FUNDRAISING***

Any program of generating additional revenue should have the approval of school leadership (pastor, principal, director). These activities should be organized and executed so that the school program is not interrupted.

Students may participate in and cooperate with worthy collections and fundraising projects conducted by a school or parish, provided such activities have been approved by the school leadership (pastor, principal, director).

## ***TRANSPORTATION/PARKING***

It is important that all families follow the carpool procedures. Please familiarize yourself with all procedures listed in the Arrival and Dismissal Section. On special days, when preschool hours are altered or days are changed, it may be necessary to follow carpool procedures that you do not normally follow.



## V. FINANCES

### ***SCHOOL TUITION POLICIES***

It is essential that the parents of Saint Timothy School students understand that the school must operate within its tuition and income to pay for salaries and supplies. The Parish subsidizes the building and its maintenance. If a family is having trouble meeting its financial obligations, it is very important that the school principal/preschool director be informed directly by the family. If any student account exceeds thirty days behind in payment, the school may begin procedures to withdraw the student for non-payment. The school will hold all academic records for students whose tuition accounts are not paid to date.

### ***TUITION AND OTHER FEE SCHEDULES***

The most current tuition and fees are listed on our website. Please refer to [www.sainttimothyschool.org](http://www.sainttimothyschool.org) for up-to-date information.

Parents/guardians are encouraged, when possible, to pay tuition fees in full by the Friday proceeding July 1<sup>st</sup> or July 1<sup>st</sup>, if it is a Friday. If tuition is received in full by this date, parents/guardians need not participate in our monthly tuition collection system.

Tuition payments are made through a tuition collection company called “FACTS”. Parents/guardians must fill out the necessary information on the “FACTS” website, no later than June 1<sup>st</sup> or upon acceptance. “FACTS” provides for automatic withdrawals from either a savings or checking account. Families who would prefer to pay by credit card may do so through the “FACTS” tuition collection, as well. MasterCard, Discover, and American Express are accepted. VISA is not accepted. There is a monthly convenience fee for selecting the credit card option. You may select to make payments monthly, on the fifth or twentieth of the month, or semi-annually. Please consult the material on the “FACTS” website that is provided as a link from our own school site.

In the event that a parent chooses to withdraw their child, the following policy will apply to any refund owing. If the family is paying their tuition through the “FACTS” tuition collection company and is making ten equal installments, the first installment is non-refundable as it covers the costs of supplies incurred per student. Payments two through ten correspond with attendance during the calendar months of September through May, with installment two covering September’s tuition, installment three covering October’s tuition, etc. Tuition is due for any month or part of a month that a child attends. Therefore, if a child attends through October 2<sup>nd</sup>, three monthly installments are due, the first to cover costs of supplies incurred, the second to cover the September tuition and the third to cover October tuition. If a fourth installment has been made, that will be refunded.

Subsequently, any family who has paid their tuition in full by July 1<sup>st</sup>, will have their tuition

prorated in the same manner. The total tuition will be divided into ten equal portions. One portion will be to cover the cost of supplies incurred per student with the subsequent portions corresponding to the months of September through May, as outlined above. This system will be used to determine the number of payments (1/10 the total tuition) that would cover the time the student attended school and the remainder of the payments would be refunded.

We understand that circumstances within families can change. If a family applies, is accepted, and enrolls but is unable to attend St. Timothy Catholic School and has notified the school office prior to June 30th, no additional fees will be incurred. If a family applies, is accepted, and enrolls but is unable to attend St. Timothy Catholic School and does not notify the school office until after June 30<sup>th</sup>, the first tuition payment will be owed. The school is required to make many contractual obligations based on enrollment figures that cannot be modified.

### **Mid-Year Enrollment**

Students entering Saint Timothy School after the initial registration process are required to pay one month's tuition on the day of enrollment plus one additional month to cover books and expenses. The total number of tuition payments (each corresponding to 1/10 of the yearly tuition) will be determined using the same system outlined above.

## **VI. CHILD RESPONSIBILITIES & BEHAVIOR**

### ***CODE OF CONDUCT***

In all areas of learning, discipline must be considered in the development of children. The Code of Conduct is based on the Gospel message of Jesus. Growth in self-discipline, a responsibility for Catholic moral values and a loving respect for the rights of all persons is encouraged and nourished by the Code of Conduct. To achieve these ends, parents, staff and children work together to create a Catholic school environment. Based upon the Catholic moral values and loving respect for others taught by Jesus, children:

- a. will be truthful.
- b. will be respectful and courteous toward all teachers and adults.
- c. will refrain from harassment of any kind.
- d. will use appropriate language.
- e. will speak respectfully to and about others.
- f. will respect all school and personal property.
- g. will play only in assigned playground areas with good sportsmanship and cooperation.
- h. will bring to school only appropriate show & tell items from home.

The school observes this Code of Conduct because it is built on fundamental Catholic social

teachings. The role of the principal/director and staff is to work with the children and parents to assist the children in developing a strong Christian attitude toward life.

## ***DISCIPLINE***

Classroom rules are designed to protect persons and property and to promote pro-social behaviors, such as sharing and taking turns. If problems arise, the children in question will be reminded of acceptable behaviors and redirected to more positive activities.

### **USE OF DISCIPLINARY ACTION**

In cases where a child is continually disruptive of others or in the case of a single serious disciplinary infraction, the teacher will apprise the principal/director of the situation. They will assist in the development of a course of action to be taken to correct the situation.

Children who lack self-discipline or who violate the rights of others can expect disciplinary action. Each offense will be dealt with on an individual basis according to the age of the child, the nature of the infraction and the severity of the case. Repeated infractions can result in more serious consequences, up to and including suspension and/or expulsion, but there is no requirement for progressive discipline.

### **SPECIFIC DISCIPLINARY POLICIES**

On the preschool level, teachers explain and model the rules for their class at the beginning of each school year. Understanding what constitutes appropriate and inappropriate behavior, and why, is an important learning process that leads children toward the goal of self-discipline.

In this learning process, children receive positive reinforcement for appropriate behavior, and redirection, understanding, counseling, and if needed, a time out consequence for inappropriate behavior. Children with behavior difficulties will be asked to sit and verbalize their problems with a staff member, come to a good solution, and rejoin activities as soon as they are ready.

Repeated behavior problems will be brought to the attention of the parents so that parents and teachers together can better understand any underlying problems and work towards a solution. In this regard, we ask all parents to communicate with us concerning any challenges their children may be facing outside of school, as they will affect a child's attitude and behavior. Good communication between home and school is essential.

In the event of a serious incident or repeated behaviors, parents may be contacted and asked to pick their child up during the school day.

### **SUSPENSION**

Suspension may be imposed as determined by the principal/director. Once the principal/director suspends a child, parents may be required to sign a behavioral contract in which they signify their

understanding of the problem and agree to work with the school in correcting the situation.

The failure of the parents to execute the above referenced agreement shall preclude the child from returning to the regular program.

### **DISMISSAL**

Conduct which is disruptive to the learning atmosphere and/or contrary to the school's Code of Conduct is justification for a principal/director to dismiss a child at the close of the school year.

Children who are dismissed may apply for readmission to any Diocesan school after one full year.

### **EXPULSION**

Expulsion may be resorted to when one or all of the following are present:

- a. a serious infraction of school rules occurs;
- b. the child has demonstrated continuing disregard of school rules for which other means of discipline have proven ineffectual;
- c. the child's continued presence in the school is considered by school officials to be a serious hindrance to the safety or welfare of the school community;
- d. a parent repeatedly or seriously violates proper school protocol, displays inappropriate or disruptive conduct toward students or displays disrespectful, disruptive or harassing behavior toward teachers or toward school, parish or diocesan staff.

If the principal/director believes it necessary to expel a child, the principal/director will notify the child and the child's parents about the child's actions and provide them with an opportunity to respond in accordance with the school's disciplinary hearing process before making any final decision on the matter.

A parent whose child is expelled may appeal this decision in writing to the Superintendent of Schools within five working days from the time of written notification.

During the pendency of any appeal, the expelled child shall be removed from the school community in compliance with the expulsion notice unless otherwise directed in the discretion of the principal/director.

Children who have been expelled from any Diocesan school may not apply for admission to that school or another Diocesan school for a minimum of one (1) year from the date of expulsion.

## ***REGULATIONS AND PROCEDURES***

Privacy of individual children must be balanced against the need to protect the health, welfare

and safety of other members of the school community. The principal/director or his/her designee has the right to protect the health, welfare and safety of school patrons by searching a child's person and/or personal property on school grounds or at school activities. Lockers and desks are school property and are subject to searches by school personnel.

## ***CARE OF SCHOOL PROPERTY***

Children are to care for school property in a respectful manner. Children who deface or damage school property or the property of others will make financial restitution.

## ***DRESS CODE***

The dress code provides a standard for our children that fosters an environment conducive to learning and respectful behavior.

Final decisions regarding the school uniform rest with the principal/director.

### **DRESS CODE REQUIREMENTS & OTHER PERTINENT INFORMATION**

The summer uniform for both boys and girls may be worn until the Columbus Day weekend in October and may be worn again starting after Easter vacation. Crew socks (white only) must be visible above the top of the shoe, and cover the ankle.

Uniform descriptions are as follows:

#### **Preschool Boys**

##### **Summer –**

Khaki pull-on **elastic shorts or pants**  
Gold t-shirt with school logo or the white polo shirt with school logo  
White crew socks  
Tennis shoes

##### **Winter – Traditional**

Khaki pull-on **elastic pants**  
White polo shirt (short or long-sleeved) with school logo  
Brown v-neck cardigan sweater with school logo (optional)  
White crew socks  
Tennis shoes  
(the gold t-shirt is not part of the winter uniform)

#### **Preschool Girls**

##### **Summer – Khaki pull-on **elastic shorts, skort, or pants****

Gold t-shirt with school logo

White crew socks  
Tennis shoes

**Winter – Traditional**

Khaki pull-on elastic pants or skirt  
White polo shirt (short or long-sleeved) with school logo  
Brown crew neck cardigan sweater with school logo (optional)  
White crew socks or white/brown tights  
Tennis shoes

Sweatshirts, sweatpants, athletic shorts, and plaid jumpers/skirts are not a part of the preschool uniform.

***PLAYGROUND REGULATIONS***

Preschoolers will use the playground daily when weather permits. Children will be taught safe and courteous procedures for using the equipment.

If your child is not well enough to play outside, please do not send your child to school. STS does not have the means to supervise children who cannot go outdoors.

***LUNCHROOM REGULATIONS***

Given the risk of potential harm, students’ access to and use of microwave ovens is prohibited. Student meals provided by parents must not be heated in microwave ovens by school personnel and/or school volunteers.

Students enrolled in the full-day program will have lunch in their classroom. Microwaves are not available for students. Due to safety concerns, no glass containers are allowed.

Parents must label all snack and lunches with the date in compliance with state regulations.

STS preschool is a peanut-free and nut-free facility.

Half-day three-year-olds bring a small snack in a lunch bag. Water cups will be provided.

Half-day four-year-olds bring a small snack and drink to school.

Full-day students bring two snacks, lunch, and drinks. Water bottles must have a straw. Snack is provided to those students attending the AfterCare program.

***SHOW & TELL***

Children are allowed to bring toys from home for the purpose of Show and Tell only. Weapons (whether real or toys) of any kind are not appropriate Show and Tell items, and shall not be brought to school for any reason. If weapons of any kind are brought to school, the child shall be subject to immediate disciplinary action which may include, but not be limited to, expulsion.

Full-day children may bring a very small stuffed animal to keep at school for use during rest time. This toy will remain at school during the week and will be sent home only on Fridays.

## ***SCHOOL CELEBRATION GUIDELINES***

### **Birthday Celebrations:**

At STS birthday celebrators are recognized by allowing the student to “dress out of uniform” in appropriate street clothes. Teachers will also acknowledge the child’s birthday in an appropriate way. Students may not bring in food items or goodie bags for the class.

**Holidays/Celebrations/PTO Events/Theme treats or parties:** These will be organized by various members over the year. Please collaborate with the teacher’s well in advance of the event. Food ingredients for the class party will be communicated to the class by the room parent. Teachers will coordinate with parents of a child with allergies. Students are welcome to leave allergy free snacks at school to ensure that they have a treat. With every celebration, please contact the school nurse at least one (1) week in advance of the event, time, and foods/drinks being served. The nurse will coordinate with a volunteer parent who will then post the foods provided to the school on the website and e-mail parents of children with allergies. She is also available to you to make suggestions for safer treats, if desired.

## VII. HEALTH, SAFETY, & WELFARE

### ***STUDENT HEALTH, SAFETY, & WELFARE***

Parents and guardians have the primary responsibility for the health and well-being of their children. School health services supplement, rather than substitute, for parental care and concern for the health of the students.

#### **PREVENTION OF SEXUAL MISCONDUCT AND/OR CHILD ABUSE**

The Catholic Diocese of Arlington Policy on the Prevention of Sexual Misconduct and/or Child Abuse generally applies to all clergy, all employees, and all volunteers.

It is the policy of the Diocese that sexual misconduct and/or child abuse while performing any work or activity under the auspices of the Diocese is contrary to Christian principles and outside the scope of any authority, duties, and/or employment of any clergy, employee, or volunteer.

Any clergy, employee, or volunteer with the Diocese who knows or has reasonable cause to suspect that an incident of child abuse or illegal sexual misconduct has been perpetrated by any individual, including clergy, employee, or volunteer with the Diocese,

- a. must comply with applicable reporting and other requirements of state and local law;
- b. must report the incident to the Moderator of the Curia of the Diocese of Arlington.

Virginia law imposes upon school personnel the legal responsibility of reporting to the local child protective services agency any incident of suspected child abuse or neglect.

School personnel who suspect the abuse or neglect of a student must report the matter directly to Child Protective Services and to the school principal/director who in turn will call the Moderator of the Curia. At that point, confidentiality must be respected.

According to the *Code of Virginia*, (Section 63.2 – 1518) *Authority to Talk to a Child or Sibling*, “Any person required to make a report or conduct an investigation or family assessment, pursuant to this chapter, may talk to any child suspected of being abused or neglected or to any of his siblings without consent of and outside the presence of his parent, guardian, legal custodian or other person standing in *loco parentis* or school personnel.”

#### **WELLNESS POLICY**

The Diocese of Arlington Office of Catholic Schools Wellness Policy (2006) meets minimum federal standards and establishes goals for physical education, nutrition, and healthy environments in schools. All schools must develop, and continue to evaluate, local school wellness policies. The local policies create a framework for increased student activity, staff wellness, safe and healthy environments, and the elimination of foods of minimal nutritional value during the school day. All schools have wellness committees to implement, sustain, and evaluate the local wellness program.



## **ACCIDENTS AND FIRST AID**

The parents of an injured student will be notified of the accident/injury by the principal/administration or the principal/administration's designee as soon as reasonably possible, taking into consideration such factors as the apparent severity of the accident/injury and the priority of providing assistance to the student.

If an incident results in a medical condition or injury which can be reasonably known to the appropriate supervisory faculty/staff member and/or the principal/director, the school and/or its staff are authorized to render reasonable basic first aid if such direct medical assistance would, in the opinion of the school, serve to minimize the severity of the injured person's condition. In addition, staff may secure a professional diagnosis and/or treatment if such action, in the opinion of the school, appears to be reasonably warranted. The school and school officials shall be expressly held harmless from any liability costs or expenses associated with the professional diagnosis and/or any treatment or first aid provided (including but not limited to the cost of transportation), such costs or expenses being the responsibility of the injured party or, if a student, the student's parents.

"[Insert additional Accidents/First Aid Information here - Optional]"

## **ILLNESS**

Each school will provide a health office or comfortable space, apart from the student population, where children who become ill or injured can be cared for following *Virginia School Health Guidelines*.

Children with fevers, contagious, or infectious diseases will be sent home promptly and excluded from school while in that condition, per Virginia Department of Health regulations. Once the student is confirmed to be free of communicable illness by a healthcare provider or is fever free/symptom free for 24 hours without taking anti-fever medications, the student may return to school, afterschool, and extracurricular activities.

When a student is requesting a waiver from participating in Physical Education classes and/or recess, parents are required to submit a written statement from their child's physician which states any activity restrictions with regard to participation in Physical Education classes and/or recess. The statement is expected to include a specific time frame for the activity restrictions.

## **MEDICATION ADMINISTRATION OVERVIEW**

All school clinic, administrators, and staff are required to administer medication within the framework of the procedures outlined in Diocesan policy and summarized here.

All prescription and over the counter (OTC) medications may be administered during the school day under the following conditions:

- a. When the need for administration of medicines during school hours has been confirmed by the school nurse/health assistant (or the school administration);
- b. After the first dose of any medication has been given at home;
- c. When the parent/guardian provides and transports the medication to and from school and the medication is given directly to the school nurse/health assistant or a senior member of the school administration;
- d. When there is a health care provider's written order signed by the parent/guardian requesting the school administer the medication or to permit the student to self-administer the medication;
- e. When the medication is brought to the school in its original container stating the name of the student, the dosage, and method of administration prescribed by a physician. It is the parent's or guardian's responsibility to notify the school of any changes to the original prescription. The new prescription must also be brought to the school in the original container as stated above;
- f. When the appropriate medication authorization form (*Appendix F-6*) has been completed, signed and accompanies the medication.
- g. For any medication, parents must document the number of tablets or dosages to be secured for administration by authorized school personnel. If tablets are to be divided, the parent or guardian is responsible for dividing the tablets in order to achieve their child's proper dosage.
- h. Herbal and homeopathic medications will not be given in Diocesan schools without written authorization by a LHCP that shall include desired and adverse effects. Protein supplements will not be administered unless directly requested by a physician with a health treatment plan.
- i. Under no circumstances are medications to be shared with other students.
- j. Picc Lines, Heparin/Saline Locks, and Central Venous Lines may be present in students with specialized health care needs. Dressing changes, heparin flushes, and other medication administration via these lines are to be done at home and should not be done at school.

All OTC and prescription medications are to be kept locked in the clinic/school office and be administered by the school nurse, clinic aide, principal/director or trained designee. No student is to carry/possess medications without appropriate medical authorization. No medication will be administered unless the school has received a signed copy of the Medication Authorization Form (*Appendix F-6*). OTC medications do not require a health care provider's signature unless the medication is required for four (4) or more consecutive days.

It shall be the student's responsibility to come to the clinic/school office at the appropriate time for medication unless a health care provider or parent indicates in writing that the student cannot do this.

Students are NOT permitted to self-medicate. The school does not assume responsibility for

medications taken independently by the student. Exceptions may be made on a case by case basis for students who demonstrate the capability to carry and self-administer emergency life-saving medications (e.g. inhaler, Epi-pen).

Within one week after expiration of the effective date on the order, or on the last day of school, the parent/guardian must personally collect any unused portion of the medication. Medications not claimed within that period will be destroyed.

### **SPECIALIZED STUDENT CARE NEEDS**

The parent of any student on a continuing regimen for a non-episodic condition shall inform the school principal/director/administration and identify, in writing, the student's supervising health care provider. If necessary, and with parental written consent, there may be occasions when the school needs to communicate with the health care provider regarding possible effects on the pupil's healthcare management, special emergency procedures, or behavior at school.

### **USE OF CRUTCHES**

An order from a Licensed Healthcare Provider (LHP) is required to use crutches at school. If a student arrives at school on crutches without a doctor's order, the parent will be called to take the student home.

### **USE OF MICROWAVE OVEN**

For preschool and elementary schools only; given the risk of potential harm, students' access and use of microwave ovens is prohibited.

### **LIFE THREATENING ALLERGY**

Schools will utilize current resources and reputable materials such as; Food Allergy Research & Education (FARE) and the CDC's *Voluntary Guidelines for Managing Food Allergies in Schools and Early Care and Education Programs* to develop allergen management communications for student handbooks, classrooms, and parental publications.

All schools must provide an annual in-service, educating school faculty and staff about the policy. Training will include minimizing the risk of exposure to life threatening allergens in the school setting as well as anaphylaxis recognition, medical management, and incident reporting.

Schools will utilize the policy to develop allergen management communications for student handbooks, classrooms, and parental publications. Schools will select and train staff to be utilized as anaphylaxis response teams responsible for managing an allergic crisis.

Parents and guardians of students with a life threatening allergy must inform the principal/director and school health personnel of any allergies and provide schools with fully executed Diocesan documents. Parents/guardians are expected to supply schools with any emergency medications as prescribed and may additionally provide the student with "safe" foods

for classroom celebrations involving food. Schools will utilize Diocesan documents to formulate an emergency care plan for the student and will share this care plan with those involved with the student including, but not limited to teacher(s), food service, bus drivers, and janitorial staff.

## ***INFECTIOUS/COMMUNICABLE DISEASES***

### **DISEASE**

Parents must notify the school within 24 hours if their child or any member of the immediate household has developed a communicable disease. Parents must notify the school immediately if the disease is life threatening. Parents must pick up their sick or injured child in a timely manner when contacted. If the parent cannot be reached, emergency contacts will be called to pick up the child.

The protection and welfare of each individual student is of importance in the schools of the Diocese of Arlington. In an effort to enhance the protection of students:

- a. No daycare/preschool student may attend class without documentary proof of adequate immunization in accordance with Virginia Department of Health's school entry requirements (or modified schedule as approved by licensed health care provider) on the Virginia School Entrance Health Form (MCH-213G).
  - i. Parents or guardians who object to the administration of immunizing agents for their child on the grounds that this conflicts with their religious tenets or practices must produce a notarized Certificate of Religious Exemption CRE-1 form, which will be retained in the student health record.
  - ii. Students who have traveled or resided in a foreign country for five months or more during the last three years are required to provide documentation of a recent tuberculosis skin test result prior to school entry.
- b. Children with fevers and/or contagious or infectious diseases will be sent home promptly and will be excluded from school while in that condition, according to the Virginia Department of Health regulations. Once the student is confirmed to be free of communicable illness by a health care provider, or is fever free/symptom free for 24 hours without taking anti-fever medications, the student may return to school.
- c. School health personnel will follow the Virginia Department of Health Communicable Disease Chart, found in the *Virginia School Health Guidelines*, when referring suspected cases of communicable disease to the local health department for excluding or readmitting a student.
- d. The Diocese of Arlington has comprehensive guidelines for school/parish-based influenza vaccination clinics. The liability associated with the vaccination of children is great. The Diocese of Arlington does not promote school based vaccination clinics for children during school hours, and in the absence of the parent, with the exception of a state or federal emergency. Any school wishing to offer an onsite school influenza vaccination program must comply with all aspects of the Memorandum of Agreement.

Vendors wishing to serve as vaccinators must be fully vetted by the Office of Risk Management prior to the consummation of any contract for services.

## **LICE**

All students determined to have an active case of lice will be excluded from school until they receive treatment. It is the responsibility of the parent/guardian to provide appropriate and adequate treatment for the student and home environment as recommended by their health care professional. Readmission to school is determined by the school nurse/administration based upon re-inspection and the effectiveness of treatment. Follow up treatment is expected and verified by the school nurse/administration. Classroom contacts may be inspected.

If a student is suspected of having an infestation of lice, the parents will be notified and asked to pick the student up from school. The school will provide detailed information concerning treatment; however, the student will not be allowed to return to school until the hair and scalp are free of all nits. The parents of all Preschool students will be notified if a case of lice is confirmed, and they will be asked to check their children.

## ***BLOODBORNE DISEASE***

The Christian community is called to respond to the sick in our midst with compassion and justice. The diocese recognizes its obligation to protect the rights of individual students infected with Hepatitis and HIV and to provide a safe environment for students, staff members, and the public. Students who are infected with bloodborne Hepatitis, Human Immunodeficiency Virus (HIV), or HIV-related conditions must be provided the opportunity to receive a Catholic school education in a regular classroom unless the student's health interferes significantly with school performance.

Since it is known that bloodborne Hepatitis and HIV are not transmitted through casual contact, any student who is infected will continue education in a regular classroom assignment unless his or her health status requires otherwise. It is the intent of the Diocese of Arlington Office of Catholic Schools to follow the recommendations of the U.S. Centers for Disease Control and Prevention (CDC) and the Virginia Department of Health which state that most bloodborne Hepatitis and HIV-infected children be allowed to attend school in an unrestricted setting and that decisions regarding school attendance be based on the medical condition of each child and the expected type of interaction with others in that setting.

Persons involved in the implementation and monitoring of this policy shall maintain confidentiality of records in compliance with federal and state law and diocesan policy. All diocesan schools shall also maintain a program of information and training for school staff members to ensure a consistent and accurate understanding regarding prevention of exposure to bloodborne pathogens. This includes training related to the proper application of universal/standard precautions.

## ***FIRE/EMERGENCY DRILLS***

To enhance the safety of children, personnel and visitors to Saint Timothy School, it is necessary to conduct regular fire drills and to inspect the physical plant for fire safety.

At the beginning of the school year, fire/emergency drill instruction will be provided in each homeroom with the continued instruction and practice throughout the year. Evacuation routes are posted in each classroom.

Fire drills will be conducted monthly.

Shelter-In-Place, an emergency preparedness plan, is in place and will be practiced throughout the school year. Plan details are available in the office.

## ***SEXUAL HARASSMENT - STUDENTS***

Sexuality affects all aspects of the person including, in a general way, the aptitude for forming bonds of communion with others. The Catholic Schools of the Diocese of Arlington endeavor to provide for their students an atmosphere free from sexual harassment.

No student is to sexually harass another member of the school community. Any student who engages in sexual harassment shall be subject to disciplinary action, up to, and including, expulsion.

Sexual harassment is defined as any unwelcome sexual advance, unwelcome physical contact of a sexual nature, or unwelcome verbal or physical conduct of a sexual nature. "Unwelcome verbal or physical conduct of a sexual nature" includes, but is not limited to, the deliberate, repeated making of unsolicited gestures or comments, or the deliberate, repeated display of offensive, sexually graphic materials via any media source which is not necessary for school purposes.

## ***BULLYING***

Bullying is defined as any aggressive and unwanted behavior that is intended to harm, intimidate, or humiliate the victim; involves a real or perceived power imbalance between aggressor or aggressors and victim; and is repeated over time or causes severe emotional trauma. Bullying includes cyber bullying. Bullying does not include ordinary teasing, horseplay, argument, or peer conflict.

Examples include, but are not limited to:

- a. Physical intimidation or assault
- b. Extortion

- c. Oral or written threats, including text messaging
- d. Malicious teasing
- e. Putdowns
- f. Name calling
- g. Threatening looks
- h. Gestures or acts of aggression (Overt and Covert)
- i. Cruel rumors & false accusations
- j. Social Isolation
- k. Cyber bullying

School personnel will not tolerate any bullying on Diocesan school grounds or at any school-sponsored activity (on or off school grounds). In addition, the Office of Catholic Schools expects students and parents who become aware of an act of bullying to report it to appropriate school personnel (e.g. principal/director, teacher, school counselor). The Office of Catholic Schools expects staff members who become aware of an incident of bullying to take appropriate steps to intervene unless intervention would be a threat to staff members' safety. If a staff member believes that his/her intervention has not resolved the matter, or if the bullying persists, he/she shall report the bullying to the school principal/director for further investigation.

In cases of reported bullying, the principal/director or designee shall interview all students involved (i.e. the aggressor(s) and the victim(s)) and investigate, as appropriate. This investigation may include interviews with students, parents and school staff; review of school records; and identification of parent and family issues. Any student who retaliates against another for reporting bullying may be subject to appropriate consequences.

Consequences for students who bully others shall depend on the results of the investigation and may include:

- a. Counseling
- b. Parent conference
- c. Detention
- d. Suspension and/or Expulsion

Depending on the severity of the incident(s), the principal/director may also report incidents of bullying to law enforcement, if appropriate.

## ***ASBESTOS MANDATORY YEARLY NOTIFICATION***

### **ASBESTOS NOTIFICATION**

In the past, asbestos was used extensively in building materials because of its insulating, sound absorbing, and fire retardant capabilities. Virtually any building constructed before the late 1970s contains some asbestos. Intact and undisturbed asbestos materials generally do not pose a health risk. Asbestos materials, however, can become hazardous when, due to damage or deterioration over time, they release fibers.

In 1986, Congress passed the Asbestos Hazard Emergency Response Act (AHERA) which requires schools to be inspected to identify any asbestos containing building materials. Every 2 years, St. Timothy Catholic School has conducted an inspection to determine whether the condition of the known or assumed asbestos containing building materials (ACBM) has changed and to make recommendations on managing or removing the ACBM. At the last inspection, all materials listed in the Management Plan as asbestos containing (or assumed to be asbestos-containing) were inspected and found to be in good condition.

The law further requires an asbestos management plan to be in place. The St. Timothy Catholic School Asbestos Management Plan has several on-going requirements.

It is the intention of St. Timothy Catholic School to comply with all federal and state regulations controlling asbestos and to take whatever steps are necessary to ensure students and employees a health and safe environment in which to learn and work. You are welcome to review a copy of the asbestos management plan at the school during regular business hours. Craig Webb, as Director of Operations, is our designated asbestos program coordinator, and all inquiries regarding the asbestos plan and asbestos-related issues should be directed to him.

## ***VIDEO SURVEILLANCE CAMERAS***

School leadership at each individual school may elect to install video surveillance cameras in order to maintain a safe and secure environment.

- a. At the discretion of the principal/director or his/her designee, video surveillance cameras may be placed in public locations deemed appropriate. Such locations may include, without limitation, school entrances/exits, lobby areas, hallways, classrooms, cafeterias, athletic areas, gathering spaces, and outdoor grounds, as well as school buses.
- b. Restrooms, changing rooms, private offices, nurse's offices, and locker rooms are excluded from security camera use.
- c. It is recognized that it will not be possible to monitor all building areas, rooms, and grounds, or to monitor any location at all times.



Schools making use of video surveillance cameras will provide notice to staff, students, and parents/guardians, by means of inclusion of this policy in their respective handbooks, that video surveillance may occur on school property. In addition, school leadership may elect to install signs at building entrances or other locations deemed appropriate to inform visitors and invitees that video surveillance may occur.

To the extent video images may be deemed appropriate to create student records or personnel records, the school shall comply with any applicable state and federal laws related to record maintenance, retention, and disclosure.

Video images obtained by the school shall be viewed by authorized school and diocesan personnel as necessary. The school and the diocese may rely on the images obtained by the video surveillance cameras in connection with the enforcement of diocesan or school policies, regulations, codes of conduct, building rules, and other applicable laws or rules, including, but not limited to, use of such images in student and staff disciplinary proceedings and matters referred to local law enforcement agencies in accordance with applicable law. Video images may become part of a student's educational record or a staff member's personnel record in accordance with applicable law.

All video recordings shall be stored in a secure place. Recordings will be saved for no less than 30 days, and may be retained longer if deemed appropriate. All video recordings are the sole property of the Catholic Diocese of Arlington. Release of such videos will be made only with the permission of the diocesan Superintendent of Schools or his/her designee.

## **VIII. CHILDREN WITH SPECIAL NEEDS**

The Office of Catholic Schools recognizes the beauty and potential inherent within each child. In an effort to foster continued growth, the school embraces the challenge to provide assistance and programs to serve children with special needs according to the resources available within/to the school. Parents are considered an integral part of the process.

In order to accommodate a child who has been evaluated for special learning needs, parents are obligated to share educational/psychological testing results and any resulting plan with the school. The refusal to provide such information is a condition for negating enrollment in the school. A child may be admitted on a probationary basis with dates and criteria of evaluation clearly established in writing.

If a child has a documented disability, a copy of the Individualized Education Plan (IEP), Individualized Services Plan (ISP), 504 plan, and/or Student Assistance Plan (SAP) should be maintained in the child's confidential file. Children who have a documented disability, but do not qualify for services through the local public school, may be eligible for accommodations through a Student Assistance Plan written at the Catholic school.

When a student qualifies for special education services through the public school and will not receive services, an Individualized Catholic Education Plan can be written following the information in the Guidelines for Serving Students with Special Needs.

Failure of the parent to sign the Student Assistance Plan or Individualized Catholic Education Plan does not prevent the implementation of the plan.

Children with disabilities are expected to follow the school's policies and honor code.

Parents should be aware that Fairfax County Public Schools offer free testing and programs for students with special needs from ages 20 months to 5 years, through "Child Find". Preschool parents who live outside of Fairfax County can access similar services in their county of residence.

## **IX. PROGRAM INFORMATION**

### ***LICENSING INFORMATION***

The Commonwealth of Virginia helps assure parents that child day programs that assume responsibility for the supervision, protection, and well-being of a child for any part of a 24-hour day are safe. Title 63.1, Chapter 10 of the Code of Virginia gives the Department of Social Services authority to license these programs. While there are some legislative exemptions to licensure, licensed programs include child day centers, family day homes, child day center systems, and family day systems. The state may also voluntarily register family day homes which are not required to be licensed.

Standards for licensed child day centers address certain health precautions, adequate play space, a ratio of children per staff member, equipment, program and record keeping. Criminal record checks and specific qualifications for staff and most volunteers working directly with children are also required. Standards require the facility to meet applicable fire, health, and building codes.

Compliance with standards is determined by announced and unannounced visits to the program by licensing staff within the Department of Social Services. In addition, parents or other individuals may register a complaint about a program which will be investigated if it violates a standard.

Three types of licensing may be issued to programs. Conditional licenses may be issued to a new program to allow up to six months for the program to demonstrate compliance with the standards. A regular license is issued when the program substantially meets the standards for licensure. A provisional license, which cannot exceed six months, is issued when the program is temporarily unable to comply with the standards. Operating without a license when required constitutes a misdemeanor which, upon conviction, can be punishable by a fine of up to \$100 or imprisonment of up to 12 months or both for each day's violation.

If you would like additional information about the licensing of child day programs or would like to register a complaint, please contact the Regional Office of Social Services closest to you.

Fairfax Licensing Office  
3701 Pender Drive, Suite 125  
Fairfax, VA 22030  
(703) 934-1505

Northern Virginia Regional Office  
320 Hospital Drive, Suite #23  
Warrenton, VA 22186  
(540) 347-6345

Central Regional Offices  
1604 Santa Rosa Road, Suite 130  
Richmond, VA 23229-5008  
(804) 662-9743

Verona Licensing Office  
Post Office Box 350  
Verona, Virginia 24482-0350  
(540) 248-9345

Eastern Regional Office  
Pembroke Office Park  
Pembroke Four Office Building, Suite 300  
Virginia Beach, VA 23452-5496  
(757) 491-3990

Piedmont Regional Office  
Commonwealth of Virginia Building  
210 Church Street, S.W., Ste. 100  
Roanoke, VA 24011-1779  
(540) 857-7920

Abingdon Licensing Office  
190 Patton Street  
Abingdon, VA 24210  
(540) 676-5490

## ***CRISIS MANAGEMENT/EMERGENCY PREPAREDNESS PLAN***

A Crisis Management/Emergency Preparedness Plan has been developed and approved. All employees have been trained accordingly.

## ***OVER-THE-COUNTER SKIN PRODUCTS***

All non-prescription drugs and over-the-counter skin products shall be used in accordance with the manufacturer's recommendations. Non-prescription drugs and over-the-counter skin products shall not be kept or used beyond the expiration date of the product.

For all over-the-counter skin products:

- a. written parent authorization noting any known adverse reactions shall be obtained;
- b. shall be in the original container labeled with the child's name;
- c. does not need to be kept locked, but shall be inaccessible to children under five years of age;
- d. any center-kept sunscreen shall be hypo-allergenic and have a minimum SPF of 15;
- e. children nine years of age and older may administer their own sunscreen, if supervised.

When insect repellent is used, a record shall be kept that includes the child's name, date of use, frequency of application, and any adverse reaction. Manufacturer's instructions for age, duration, and dosage shall be followed.

## ***INSURANCE***

The program is covered by public liability insurance through the Diocese of Arlington and the Catholic Mutual Relief Society of America. Student insurance must be provided by the family through their own policy or purchased through an independent school insurance provider.

## ***TAX INFORMATION***

Because the Internal Revenue Service requires identification of care givers in order to claim a credit for child and dependent care expenses, the school will complete and return to the parent any W-10 that is sent in, provided Part II is already completed by the parent.

## ***PARENTAL INVOLVEMENT***

In compliance with state regulations for state licensed programs, a custodial parent shall be admitted to any child day program. Such right of admission shall apply only while the child is in the child day program (63.2-1813 of Code of Virginia).

<b>X. APPENDICES</b>
----------------------

### Diocesan Forms

- Permission for Emergency Care Form (*Appendix F-1*)
- Confidential Health History Update (*Appendix F-1A*)
- Virginia School Entrance Health Form (*Appendix F-2*)
- Virginia School Entrance Health Form Instructions (*Appendix F-2A*)
- Inhaler Authorization Form (*Appendix F-3*)
- Asthma Action Plan (*Appendix F-3A*)
- Epipen/Twinject Authorization Form (*Appendix F-4*)
- Allergy Action Plan (*Appendix F-4A*)
- Diabetes Reference Emergency Plan: Hyperglycemia & Hypoglycemia (*Appendix F-5*)
- Diabetes Medical Management Plan (*Appendix F-5A*)
- Medication Authorization Form (*Appendix F-6*)
- Letter to Parents Regarding Possible Reimbursement of Medical Cost (*Appendix F-7A*)
- Insurance Billing Form (*Appendix F-7B*)
- Confidential Individual Health Office Visit Record (*Appendix F-11*)
- Seizure Action Plan (*Appendix F-20*)
- Waiver Information/Right to Object Form (*Appendix N*)
- Parent Permission Form for School Sponsored Trip Participation (*Appendix R*)
- Use of Personal Vehicle (*Appendix R-1*)
- Academic Intervention Plan (*Appendix AA*)
- Preschool Handbook Agreement Form (*Appendix AG-3*)

Signature Page